

621.316.929

. . . ,

. (0619) 42-32-63

—

,

-

.

—

,

-

,

,

.

,

,

,

15-20 %

.

[1].

.

.

.

,

,

,

,

[2].

-

.

,

.

,

-n

.

-

()

-

[3].

(,) .

-n

-n

n

[4].

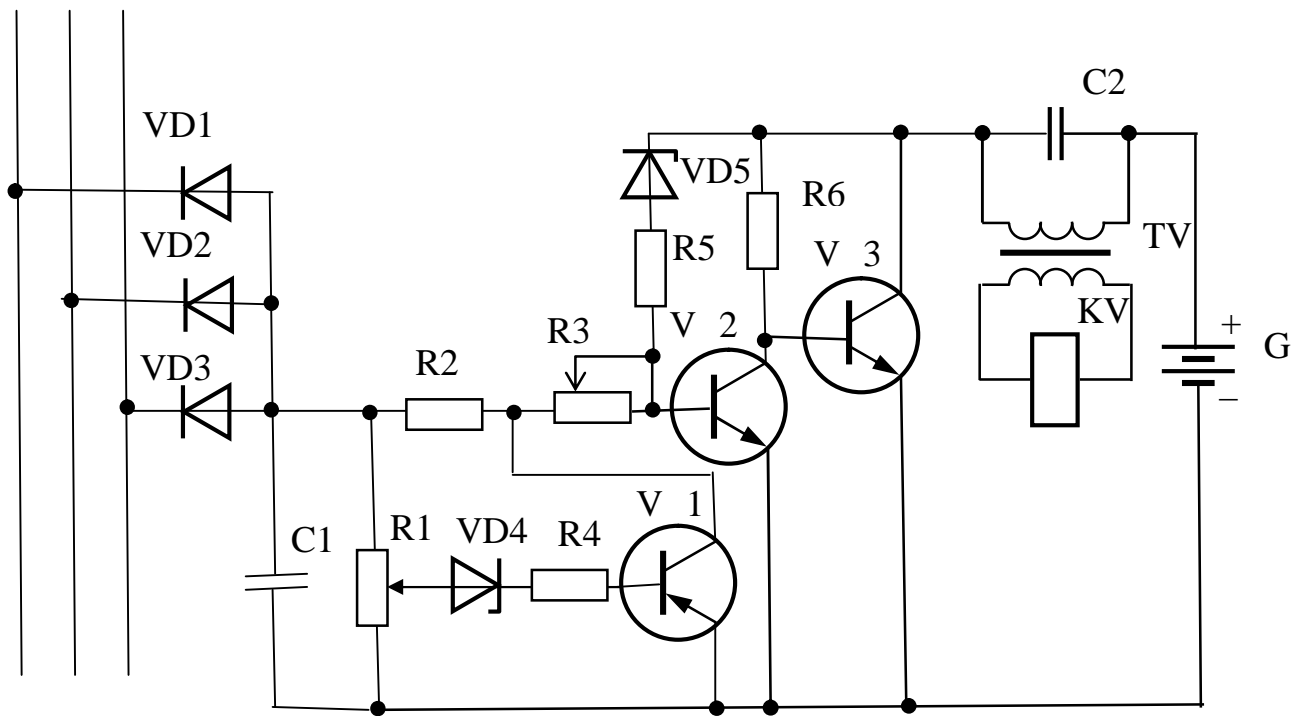
(10)

(.) .

VD1 - VD3,
R1

1
VD4.

VT2 VT3



1 -

LC-
VT3
R1,
VD4,
VT1.
VT2,
VT2
VT3
VT3
'B'.
LC-
C2
()
V,
V,

VT1 [5].

1. //
 , -2002. - 5, - .23-25.
2.
 / -4-
 - .: , 1984.-240 .
3.
 /
 :
4. , 2000. .3. - .178-180.
 50344 , 7 02 7/09.
 / ,
 () . - 2001128981; . 25.12.2001;
 .15.10.2002, . 10
5. 45353 , (2009) G01 7/16, 02 7/09.
 /
 () . - u200904659;
 . 12.05.2009; .10.11.2009, . 21. 2009.

DEVELOPMENT DEVICE CHECKING THE DEFLECTION OF THE VOLTAGE ON INDUCTION MOTOR

I. Popova

Summary – The Abstract - in work is presented electric principle scheme device checking the deflection of the voltage on grip of the induction motor, in which as sensor of the deflection of the voltage is used analogue lambda-diode on bipolar transistor.